

Peggy Smith Guthrie Harris, Class of 1962, who not only provided her own memories but passed on memories from her cousins and others, or helped me to connect with them myself

Errol Wofford, Class of 1961, for his memories

Jo Ann Toews Rice, Class of 1964, for her memories of her mom as cook, in both old and new kitchens

My brother Arrel Toews, Class of 1966, for his memories

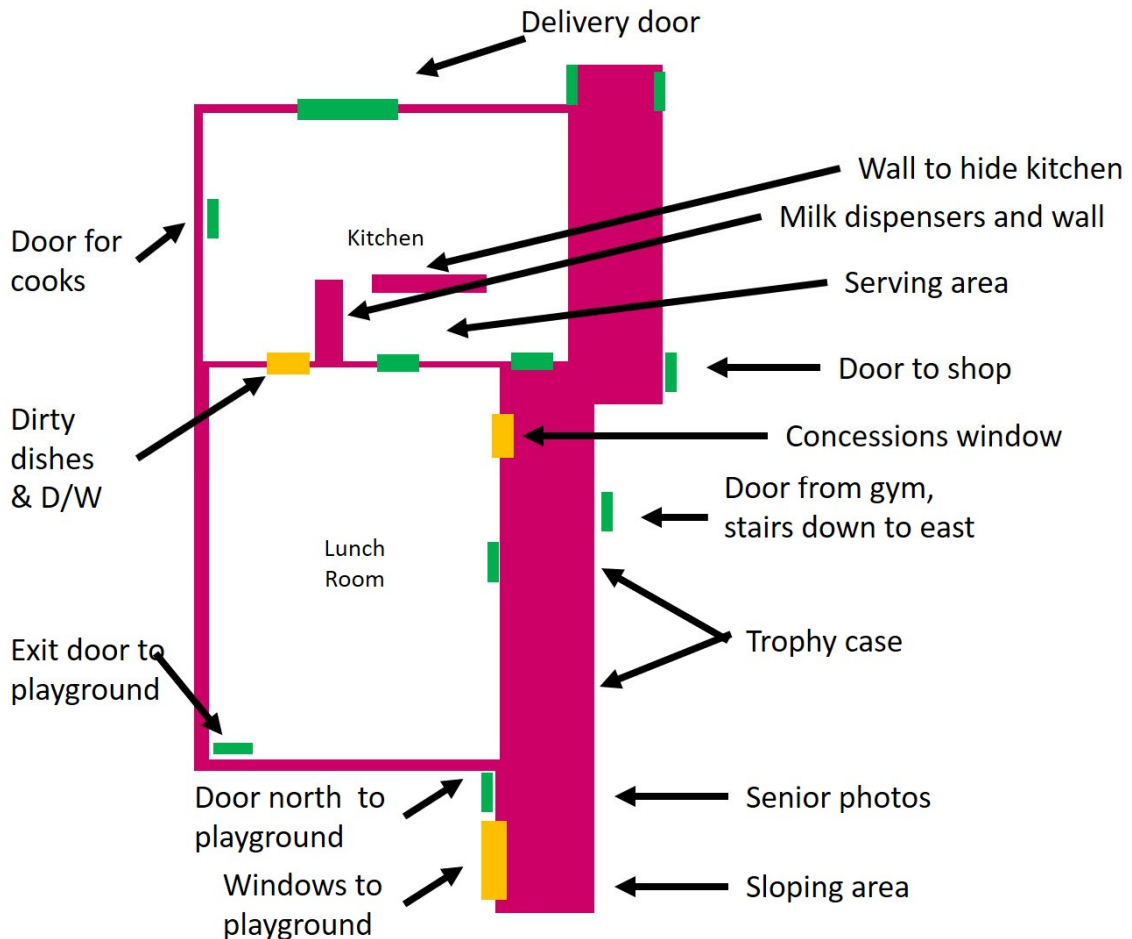
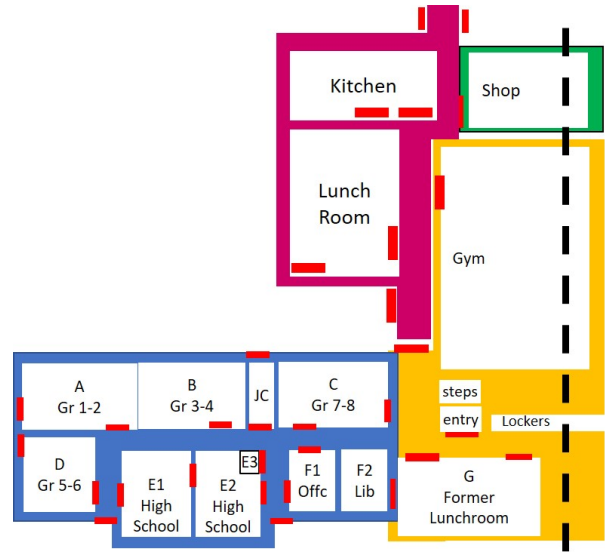
Eldon Toews, Class of 1967

Pam Voth, Class of 1977, for a very important answer to what was a puzzle for me

My brother Arrel Toews, Class of 1966, for help with editing and style content suggestions

Chapter 6. The Lunchroom, Kitchen, and Hallway Addition, 1962

The next addition to the school, in maroon, was a new modern and larger kitchen and lunchroom built onto the north wall of the gymnasium, along with a hallway for access to the kitchen and lunchroom and to the shop. The kitchen area was at the east end, with the lunchroom larger and to the west. There was perhaps a 20-ft open space left between the west wall of the lunchroom and the east wall of the first 6-room red brick building. This addition is shown under early construction in the 1962 yearbook, indicating that it was presumably finished that summer and ready for use for the 1962-63 school year. The right diagram shows perhaps imperfect location of the addition in marron; the bottom diagram shows additional key features. [More memories and photos needed for this addition, especially the hallway features!](#)



6.1. The building

The left photo below shows the building beginning construction, from the 1962 yearbook. Based on the gymnasium window showing, this must be the east (back) wall of the kitchen, looking west. The window would be the window at the north end of the east wall of the gym; we are fairly certain that what appears to be another window seen through that window must in fact be the reflection of that east-side window on the north wall of the gym. There were no locations in the gym with two windows on opposite sides of a corner. The left photo below has been reversed from the way it was printed in the yearbook, the only orientation that makes sense.



The door shown in the left photo above is the door for food and supplies to be delivered into the kitchen area. The right photo above, from the 1967 yearbook, shows the row of windows all along the north wall of the lunchroom, the exit door on the west wall, and part of the space between the new building and the 6-room red brick school building to the west. The area between the two buildings was mostly concrete, to avoid mud, and with a four-square court and sheltered play area, shown in the photo to the right, also from 1967. The playground was moved further north to make room for this addition, as shown in the left photo below, from 1965. Another door into the kitchen from the north is shown in this photo also. The right photo below, from the 1967 yearbook, is of the east side of the building at the north end; it shows what appears to be a ventilation window there, along with cheerleaders practicing. It is a bit puzzling to me that playground equipment is not apparent in this photo.



6.2. The connecting hallway

Besides the new kitchen and lunchroom, another very important part of this addition was a hallway leading to all things north and east, from the double doors exiting the previous buildings between the 7th-8th grade classroom and the north entrance to the gym. This hallway sloped down from its west entrance to the floor level of the kitchen/lunchroom and the shop room. At ground level on the left, as I remember it, was a door out to the area between the new lunchroom and the 6-room brick building, and beyond that were large windows looking out to that area; I have no photos to document this door. At the bottom of the ramp on the right was a new set of swinging display windows for the senior photo panels, and further east from that on the right was a large new trophy case. Just east of the trophy case were the stairs to and from the north door of the gym, and some distance beyond that, and with a jog to the right, was the double-door north entrance to the shop room. After the windows on the left was a door to and from the center of the lunchroom. Further east was a stainless-steel window and shelf that was used as the concession stand, this being located a bit east of the bottom of the steps out north from the gym.

The photo below, from the 1965 yearbook, provides a good view from the west end of the hallway looking to the east. On the far right is the right entrance door to the hallway, then the senior photo panels, the trophy case, and the gym steps. The door on the south side of the east (back) wall was the entrance to the kitchen for students getting their lunches. On the left is a coat rack, a bit of the windows to the north, double doors into the lunchroom area, and the concessions window barely visible at the back left. Just inside the door on the left, a short wall is visible, that no one remembers clearly. This is the wall between the boys and the girls in the top right photo on page 5 below.



The 2015 photo below, from days prior to demolition, shows a similar view, perhaps with some elements clearer; but many also changed! The front set of lockers is where the senior photos were originally, and the



second set of lockers is in the former trophy case. The concession window is seen more clearly here. The north doorway into the lunchroom has been widened here, now serving as the entrance to the 1968 grade school addition. The former windows out to the playground have been changed to a smaller built-in trophy case.

The photo below is useful only in being a yearbook photo showing the windows on the north wall near the west end of the hallway; it does not shed any light on whether there was a door out to the play area just east or west of those windows.



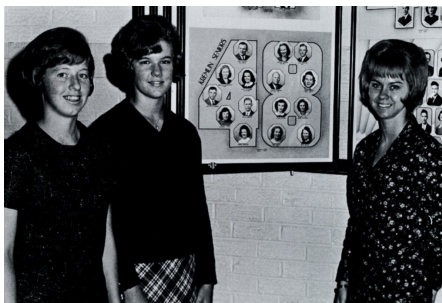
The photos below show the gym door and steps (left photo, from 1963), trophy case (middle photo, from 1965), and the concession stand window (right photo, from 1963). The concession stand window is fully open here, from the inside of the lunchroom; the girls are sitting in the lunchroom, the boys standing in the hallway leading into the kitchen serving area, and with the double doors into the Shop behind them.



The doorway and landing from the gym into the hallway became a favored location for group photos. Here are class officer photos at this location showing all three of us Toews Brothers; 1963 for Galen (left) and Arrel (middle), 1965 for Myron (right).



The left photo below, from 1967, shows another nice view of the senior photo panels display. The middle photo, from 1968, shows the cooks posing in front of the new trophy case. The right photo, from 1969, shows students with the carbonated drinks dispenser of later years, with the concession stand window to the right.



6.3. The kitchen

Students entered the kitchen to get their food from the door at the east end of the hallway and southwest corner of the kitchen, further south than the lunchroom. Trays were picked up just inside that door, at the south end of the counter, rolls and pizza and some foods were served from the center of the counter, and at the north end of the serving counter were the steam pots for serving hot foods. On the wall at the north end of the serving counter were two milk dispensers. The wall behind the serving counter kept the cooking area from being seen by students getting food. These features are shown fairly well in the photos here, the left photo from 1967 and the right photo from 1963. The right photo shows the large refrigerator and/or freezer and the dough mixer. North of the wall behind the milk dispensers was the dishwasher, with a window opening to the lunchroom for students to return their trays and dirty table service. I presume there would have been a walk-in refrigerator and/or freezer at this time also, but I do not know where it would have been located.



6.4. The lunchroom eating area

As indicated, this was a large room, with a doors on the south wall near the center, a door out to the play area at the north end of the west wall, and tall windows all along the north wall. The photos here show students ready to sit down to eat (left, from 1965) and a parent volunteer for a party in the lunchroom (right, from 1967). The right photo shows the north wall windows, and both photos nicely show the new tables and chairs.



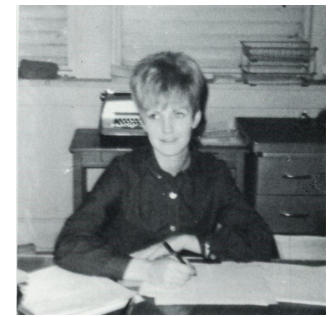
6.5. Changes to the former kitchen, lunchroom, study hall, and library at this time

When the previous kitchen and lunchroom (see Chapter 4) were no longer needed, they took on new uses. What had been the lunchroom now became close to full-time study hall, though it was occasionally pressed into service as a classroom as needed; I remember having Biology there as a classroom, likely my sophomore year, 1966-67. I believe the original tables and chairs continued to be used for at least a few years. What had been the kitchen became the new library, with bookshelves along the back wall; my memory was of one of the former serving windows becoming the window for requesting and checking out books, but photos only show this as an open space with a table or tables in front. What had previously been the library, Room F2 from Chapter 4, now became a dedicated Superintendent's office, with doors from both the north-south hallway and from the "public" office in Room F1. I do not remember whether the former library window into the lunchroom was bricked over or just taken out of service. I also do not remember whether the Principal's desk was in that same F2 office, or perhaps in F1 for some years. The Superintendent's office appears to also have been used for School Board meetings. For sure in later years, the school secretary's desk was the only one in the F1 office, along with the mimeograph machine, mailboxes, and teachers' supplies. Whether all of these changes occurred in 1962, or came along later, is not certain.

The left photo below is from the 1964 yearbook; it could still be the library window into Room F2, or it could be one of the serving windows open to the library shelves in the former kitchen. The right two photos below, from 1969, clearly show open shelves in the library area and tables with free access from the study hall to the north. [As always, clear memories from others are needed and welcome.](#)



The photos below are of the Superintendent's office in what had been the library, Room F2. The left photo is of Superintendent Claude Gist the year of his retirement, 1965; the middle photo is of the School Board meeting, or at least posing, at the Superintendent's desk, from 1967. The right photo is the first yearbook photo of a school secretary, from 1969, in the north (F1) part of the office; it is thus likely that the Principal's desk was in F1 until the 1968-69 school year, the year of the merger of Kremlin and Hillsdale Schools.



6.6. Additional changes in this time frame

The wooden bus barn directly north of the 6-room red brick school, now the grade school end of the building, was removed and replaced by a new galvanized steel bus barn across the street east from the Columbia school house. The exact year is not known. The wooden bus barn does not show up at the north end of the brick school in yearbook photos starting around 1960 or so, but the first yearbook photo showing the new bus barn in the background is from 1962. However, this photo clearly shows "Sr 59" spray-painted on the side of the new bus barn, suggesting that it was likely there by spring of 1959. These same photos from 1962, below, also show what is now a nice baseball field between the grade school and the bus barn, complete with benches and backstop.



Also in this time period, new lab benches were added to the science room. The left photo below is from Oklahoma Historical Society archives (found by Arrel) and shows Claude Gist, Superintendent, and Merlin Rodgers, Principal and Science teacher, starting to open the crates with the new benches, November, 1961. The middle photo below is from 1962, showing the new lab benches in use for some "wet lab" work. The right photo below is from 1966, by which time more clever and less appropriate uses for the lab benches had been discovered -- unique uses of molecular models atoms as balls and a pointer as the cue stick.

